



Tipps Tricks

Starke Kombination von CNC Maschine und Zeta P2



Nesting-Maschinen



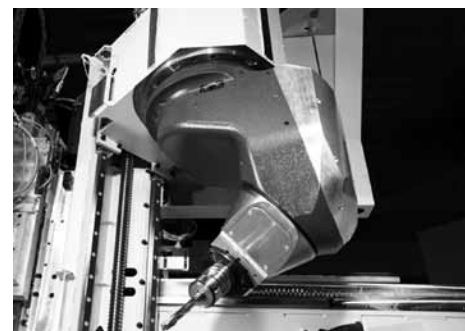
CNC mit 3-Achsen

ohne Winkelaggregat

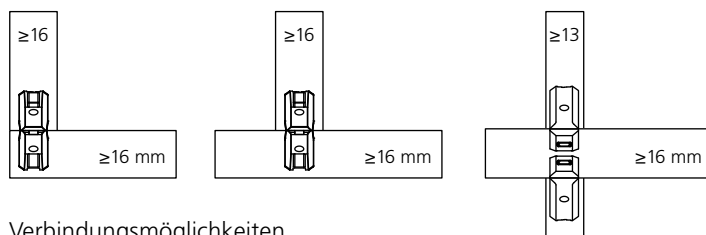


CNC mit 5-Achsen

ohne Winkelaggregat

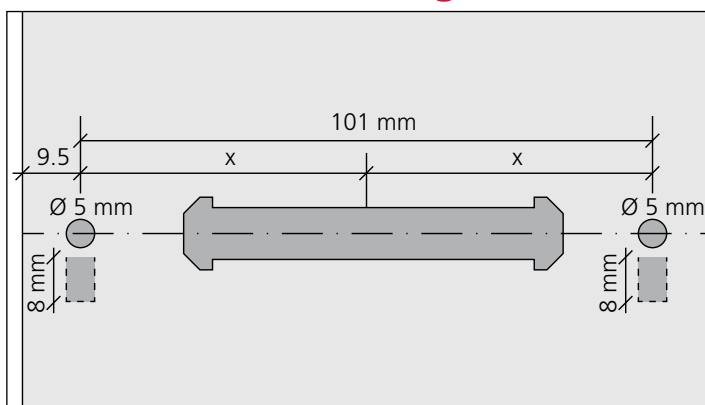


Zeta P2

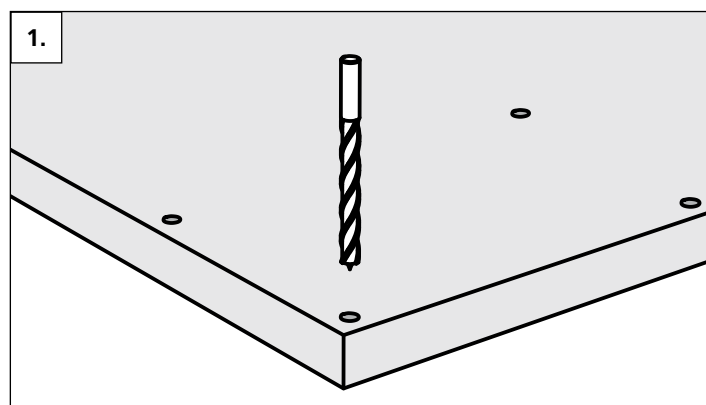


Verbindungsmöglichkeiten

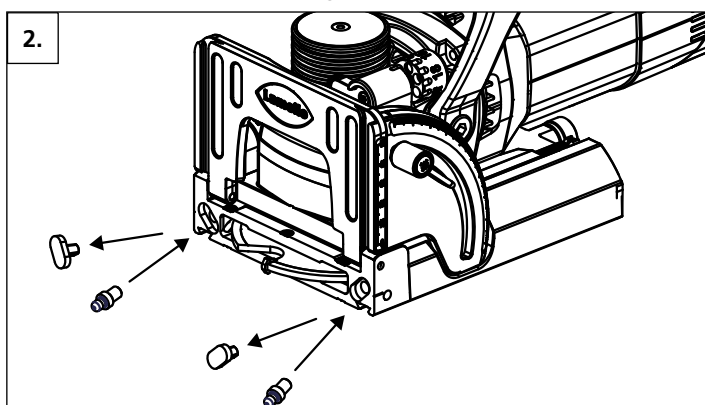
So funktioniert's: Fräsung in der Fläche



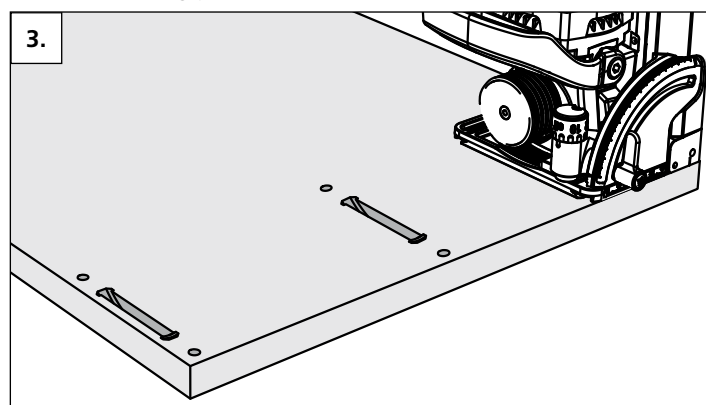
Bohrbild der Positionierbohrungen, Ø 5 mm / Ø 8 mm



Positionsbohrung per CNC, Ø 5 mm / Ø 8 mm

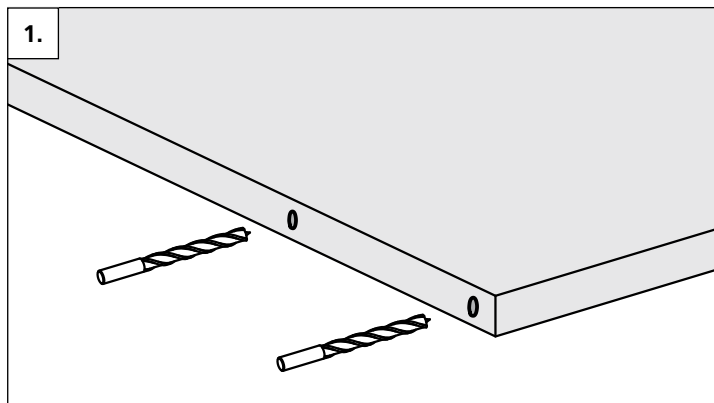


Positionierstifte an der Zeta P2 montieren

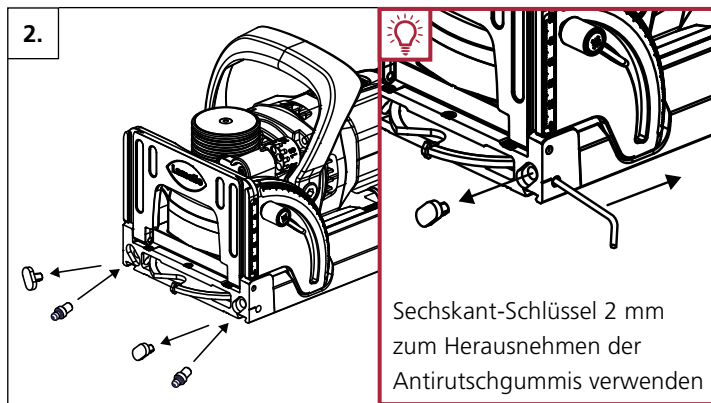


Maschine in den Bohrungen positionieren

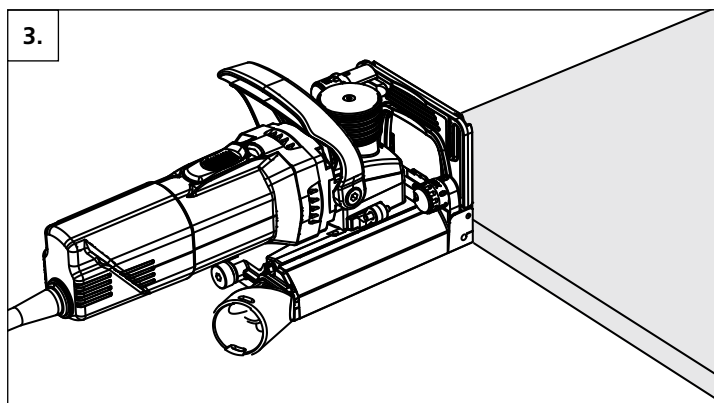
So funktioniert's: Fräsung in der Kante



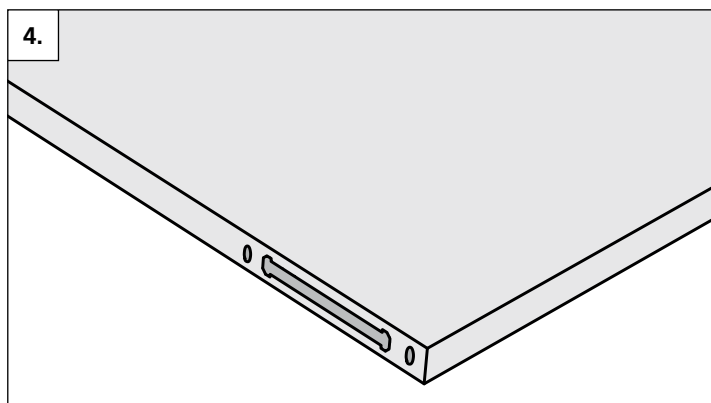
Positionierungsbohrungen auf CNC, \varnothing 5 mm, \varnothing 8 mm in Kante



Positionierstifte an der Zeta P2 montieren



Maschine in den Bohrungen positionieren



Fertige Fräsung



Zeta P2	Art.Nr.
mit HW-Profilnutfräser	101402
mit Diamant-Profilnutfräser	101402D

Positionierstift Zeta P2	Art.Nr.
\varnothing 5 mm, 1 Paar	251048
\varnothing 8 mm, 1 Paar	251066

Tenso P-14	Art.Nr.
80 Paar	145415
300 Paar	145425
1000 Paar	145435



Clamex P-14	Art.Nr.
80 Paar	145334
300 Paar	145346
1000 Paar	145356

Clamex P Medius 14/10	Art.Nr.
80 Paar	145370
300 Paar	145371
1000 Paar	145357

Clamex P-10	Art.Nr.
80 Paar	145372
300 Paar	145373
1000 Paar	145374



Hersteller:
Lamello AG
Verbindungstechnik
 Hauptstrasse 149
 CH-4416 Bubendorf
 Tel. 061 935 36 36
 Fax 061 935 36 06
 info@lamello.ch
 www.lamello.ch